

# Good Ol' Aussie Song Medley

DGX 640 Style 095 Tempo 100 Auto Intro & End

**1 Along The Road To Gundagai**

Rhythm A

3 There's a track win - ding back to an  
old fashion - ed shack a - long the road to Gun - da - gai.  
7  
11 Where the blue gums are grow - ing and the  
15 Mur - rum - bid - gee's flow - ing be - neath the clear blue sky.  
19 Where my Dad - dy and Moth - er are  
23 wait - ing for me, and the pals of my child - hood once  
27 more I will see. Then no more will I roam, when I'm  
head - ing right for home, a - long the road to Gun - da -

Chords: G, B7, C, G, A7, D7, E7, G7, A7, D7, G, E7, A7, D7, G, A7, D7, G, A7, D7

## Where The Dog Sits On The Tuckerbox

31 G C G G

gai. My Mab - el waits for me un - der -

35

neath the bright blue sky, where the dog sits on the

38 D7 G

tuck - er - box five miles from Gun - da - gai. I meet her

42

ev - 'ry day and I know she's 'din - ki di', where the

45 D7 G

dog sits on the tuck - er - box five miles from Gun - da - gai.

49 **Bridge** C G

I think she's 'bon - za' and she reck - ons I'm 'good - o'.

53 Emin D7

She's such a trim - mer that I've enter - ed her in the

56 G

loc - al show. And my Mab - el waits for me un - der -

59



neath the bright blue sky where the dog sits on the

62



tuck - er - box five miles from Gun - da - gai. I'm go - ing

65



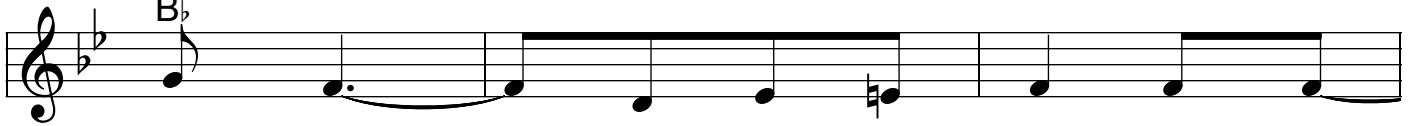
back a - gain to Yar - ra - won - ga

68



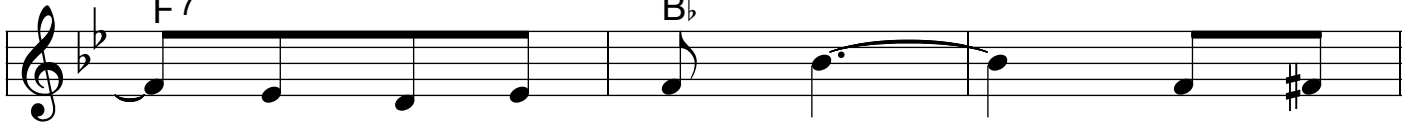
in Yar - ra - won - ga I'll lin - ger

71



lon - ger. I'm go - ing back a - gain

74



to Yar - ra - won - ga where the

77



skies are al - ways blue. And when I'm

81



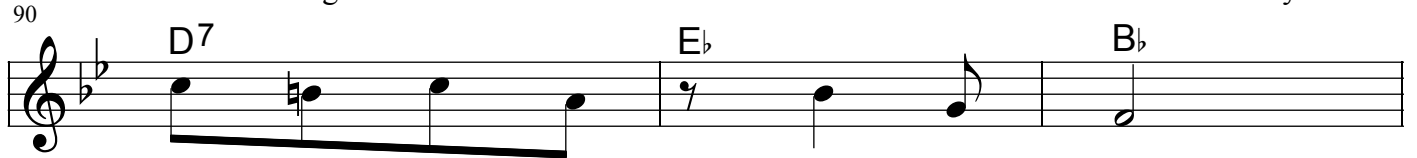
back a - gain in Yar - ra - won - ga

84 

I'll soon be strong - er than old Ma -

87 

hon - ger. You can have all your

90 

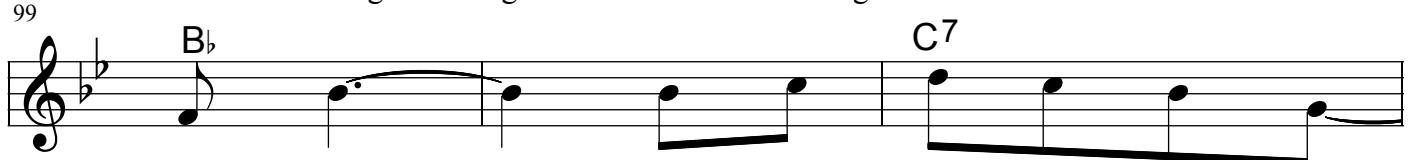
Ten - nes - see and Car - a - line.

93 

France and Bel - gium thrown in take the whole lot for mine

96 

I'm go - ing back a - gain to Yar - ra -

99 

won - ga and the land of the Kan -

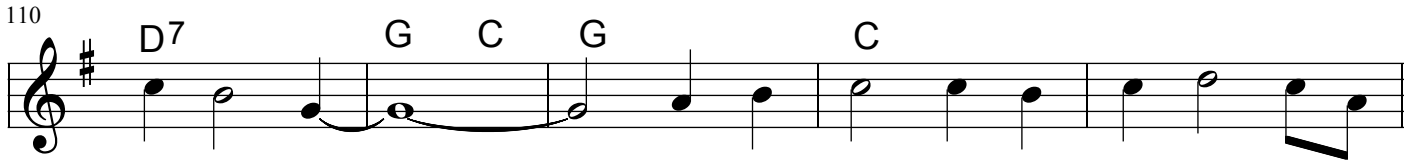
102 

ga - roo. There's a track wind - ing

106 

back to an old fashion - ed shack a - long the road to

110



D7 G C G C

Gun - da - gai. Where the blue gums are grow - ing and the

Detailed description: This block contains the first line of music, measures 110-114. It is written on a single staff in G major (one sharp). The key signature is G major. The notes are: G4 (quarter), A4 (quarter), B4 (quarter), G4 (quarter), A4 (quarter), B4 (quarter), C5 (quarter), B4 (quarter), A4 (quarter), G4 (quarter), F#4 (quarter), E4 (quarter), D4 (quarter), C4 (quarter). The lyrics are: 'Gun - da - gai. Where the blue gums are grow - ing and the'.

115

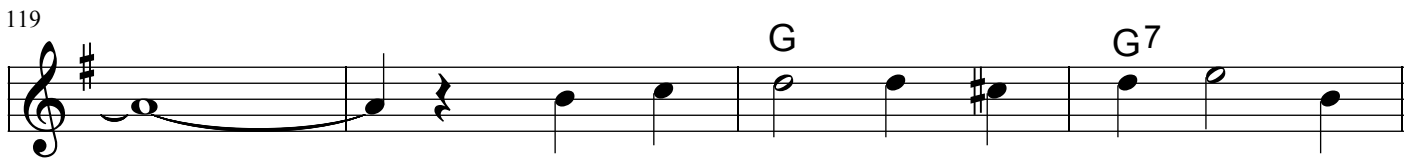


G E7 A7 D7

Mur - rum - bid - gee's flow - ing be - neath the clear blue sky.

Detailed description: This block contains the second line of music, measures 115-118. It is written on a single staff in G major. The notes are: G4 (quarter), F#4 (quarter), E4 (quarter), D4 (quarter), C4 (quarter), B3 (quarter), A3 (quarter), G3 (quarter), F#3 (quarter), E3 (quarter), D3 (quarter), C3 (quarter), B2 (quarter), A2 (quarter), G2 (quarter). The lyrics are: 'Mur - rum - bid - gee's flow - ing be - neath the clear blue sky.'

119

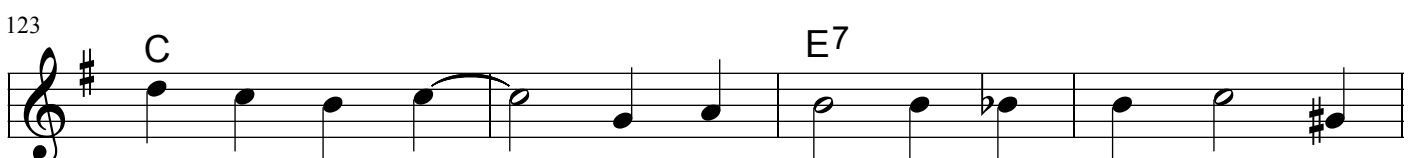


G G7

Where my Dad - dy and Moth - er are

Detailed description: This block contains the third line of music, measures 119-122. It is written on a single staff in G major. The notes are: G4 (quarter), A4 (quarter), B4 (quarter), G4 (quarter), F#4 (quarter), E4 (quarter), D4 (quarter), C4 (quarter), B3 (quarter), A3 (quarter), G3 (quarter), F#3 (quarter), E3 (quarter), D3 (quarter), C3 (quarter), B2 (quarter), A2 (quarter), G2 (quarter). The lyrics are: 'Where my Dad - dy and Moth - er are'.

123



C E7

wait - ing for me, and the pals of my child - hood once

Detailed description: This block contains the fourth line of music, measures 123-126. It is written on a single staff in G major. The notes are: G4 (quarter), A4 (quarter), B4 (quarter), G4 (quarter), F#4 (quarter), E4 (quarter), D4 (quarter), C4 (quarter), B3 (quarter), A3 (quarter), G3 (quarter), F#3 (quarter), E3 (quarter), D3 (quarter), C3 (quarter), B2 (quarter), A2 (quarter), G2 (quarter). The lyrics are: 'wait - ing for me, and the pals of my child - hood once'.

127



A7 D7 G B7

more I will see. Then no more will I roam, when I'm

Detailed description: This block contains the fifth line of music, measures 127-130. It is written on a single staff in G major. The notes are: G4 (quarter), A4 (quarter), B4 (quarter), G4 (quarter), F#4 (quarter), E4 (quarter), D4 (quarter), C4 (quarter), B3 (quarter), A3 (quarter), G3 (quarter), F#3 (quarter), E3 (quarter), D3 (quarter), C3 (quarter), B2 (quarter), A2 (quarter), G2 (quarter). The lyrics are: 'more I will see. Then no more will I roam, when I'm'.

131

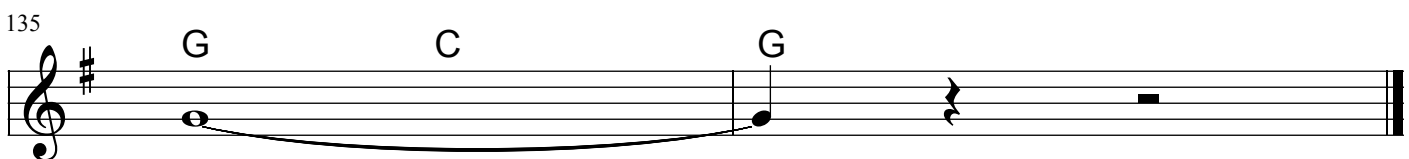


C G A7 D7

head - ing right for home, a - long the road to Gun - da -

Detailed description: This block contains the sixth line of music, measures 131-134. It is written on a single staff in G major. The notes are: G4 (quarter), A4 (quarter), B4 (quarter), G4 (quarter), F#4 (quarter), E4 (quarter), D4 (quarter), C4 (quarter), B3 (quarter), A3 (quarter), G3 (quarter), F#3 (quarter), E3 (quarter), D3 (quarter), C3 (quarter), B2 (quarter), A2 (quarter), G2 (quarter). The lyrics are: 'head - ing right for home, a - long the road to Gun - da -'.

135



G C G

gai.

Detailed description: This block contains the seventh line of music, measures 135-138. It is written on a single staff in G major. The notes are: G4 (quarter), A4 (quarter), B4 (quarter), G4 (quarter), F#4 (quarter), E4 (quarter), D4 (quarter), C4 (quarter), B3 (quarter), A3 (quarter), G3 (quarter), F#3 (quarter), E3 (quarter), D3 (quarter), C3 (quarter), B2 (quarter), A2 (quarter), G2 (quarter). The lyrics are: 'gai.'